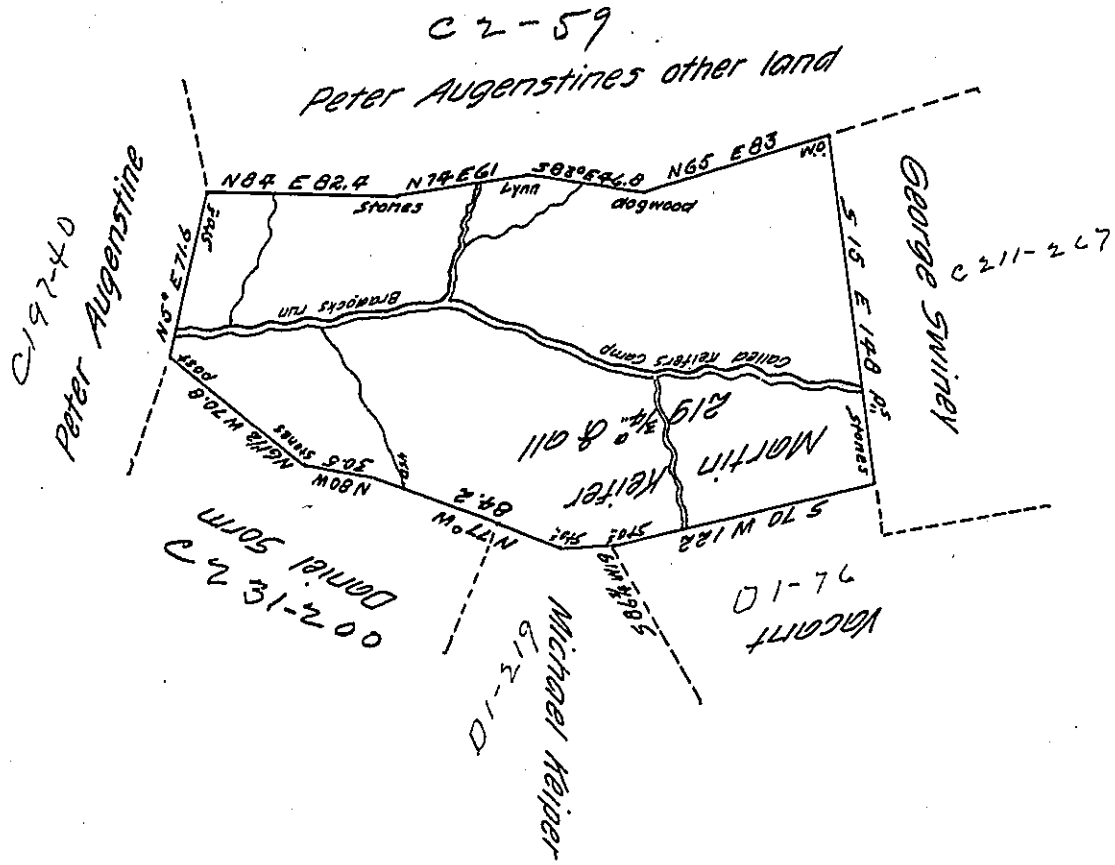


Note this survey has been returned, but an error in calculation has since been discovered and as it is not yet patented please pardon the errors and accept this in the room of ye former  
Jn. McClean -  
S.C.E.S.G.



Situate on Bradlocks run a branch of the great Crossings late in Turkey-foot Township Bedford now Addison Township Somerset County and surveyed the 10<sup>th</sup> day of March 1786 by Alexander McClean Esquire late Deputy Surveyor in pursuance of a warrant dated the 16<sup>th</sup> day of February 1786

To Samuel Cochran Esquire } And Certified the 9<sup>th</sup> day of May 1802  
 Surveyor General } P. John McClean Deputy

IN TESTIMONY that the above is a copy of the original remaining on file in the Department of Internal Affairs of Pennsylvania, made conformably to an Act of Assembly approved the 16th day of February, 1833, I have hereunto set my Hand and caused the Seal of said Department to be affixed at Harrisburg, this twelfth day of July 1905

*Geo. P. Swann*  
Secretary of Internal Affairs.